

ELECTROMECHANICA CORMAR

PRODUCT GUIDE 2014 R2



**ELECTRO
MECCANICA
CORMAR**

Introducing ELECTROMECHANICA CORMAR

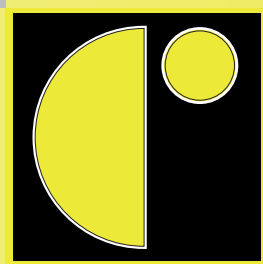
For more than 45 years, Electromecánica Cormar S.A. has been dedicated to the development and production of world class battery master switches.

Established in Granollers, Spain in 1968, Electromecánica Cormar is now located in Llinars del Valles, a major industrial area in the busy economic hub of Barcelona. They not only service the local market but deliver an extensive range of product to OEM and aftermarket customers across the globe.

Electromecánica Cormar products are used in a myriad of transport and equipment applications on land and sea, from stationary engines to massive haul trucks, small runabouts to the largest yachts. If there is a need for a battery switch then there is a product from Electromecánica Cormar for the job.

Amelec Australia are proud to be partnered with a manufacturer of such reputable standing as Electromecánica Cormar and distribute their range of quality products throughout Australia and New Zealand.





**ELECTRO
MECANICA
CORMAR**



Images left to right, courtesy of: Sicnag, Nachoman-au, Wouter Hagens, Ryan G. Wilber, Dleighuk.

	model	continuous current	peak current (5 seconds)	max voltage of contacts	environmental protection	application	PAGE
	500000	75A	350A	48	IP61	automotive	4-5
	500002	75A	350A	48	IP61	automotive	4-5
	500020	75A	350A	48	IP61	automotive	4-5
	500026 500027 500028	75A 80A 85A	200A 250A 300A	24	N/A	automotive	6
	500023	100A	500A	48	IP63	automotive	7
	500006 500008	150A	1000A	48	IP63	automotive	8
	530100	150A	1000A	48	IP65	automotive	9
	530101	150A	1000A	48	IP65	automotive	10
	500010	250A	2500A	48	IP65	automotive	11
	500055	250A	2500A	48	IP66	automotive	12
	500018	250A	2000A	48	N/A	automotive	13

	model	continuous current	peak current (5 seconds)	max voltage of contacts	environmental protection	application	PAGE
	500013	300A	3000A	48	IP67	automotive	14
	500024	300A	3000A	48	IP63	automotive	15
	500015	350A	3500A	48	IP67	automotive	16
	530110	250A	2500A	48	IP65	automotive	17
	500001	75A	350A	48	IP67	marine	18-19
	500043	75A	350A	48	IP67	marine	18-19
	500021	75A	350A	48	IP67	marine	18-19
	530102	150A	1000A	48	IP65	marine	20
	500014	350A	3500A	48	IP67	marine	21
	530111	250A	2500A	48	IP65	marine	22
	530000 530001 530010 530011	300A	2400A (1 second)	48	IP65	automotive/ marine	23-24

Battery Master Switch

Single Pole 75A Continuous

A range of economical thermoplastic switches for vehicle auxiliary circuits, stationary engines, generating sets, small engines, etc. Available as a standard switch, with weather seal boot and cap or as a key lock version.

500000 / 500002 / 500020

Specifications

CODE NUMBERS:

- 500000 - Standard
- 500002 - With weather seal protection
- 500020 - Lockable with removable key

GENERAL

Key/handle removable in OFF position only.

ELECTRICAL

Rated Voltage:	48VDC maximum
Rated Current:	75/350 Amps sustained/5 secs
Configuration:	Normally Open (N/O)

PHYSICAL

Termination:	M10 copper studs
Stud Torque:	15 ± 1.0 Nm
Contacts:	Copper
Hardware:	Brass nuts and washers
Construction:	Thermoplastic body and handle
Environmental:	IP61
Operating Temp:	-40°C to +85°C
Weight (nominal):	
500000	135 Grams
500002	155 Grams
500020	150 Grams (with key)

OPTIONS

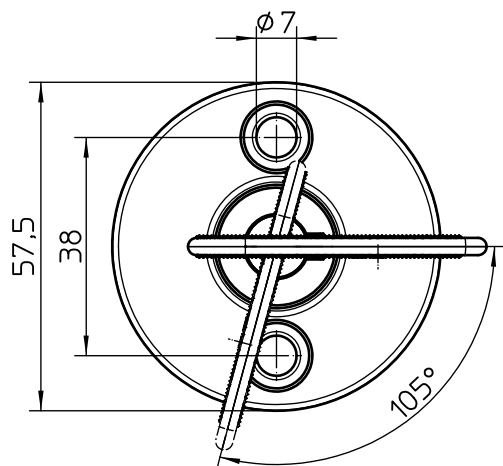
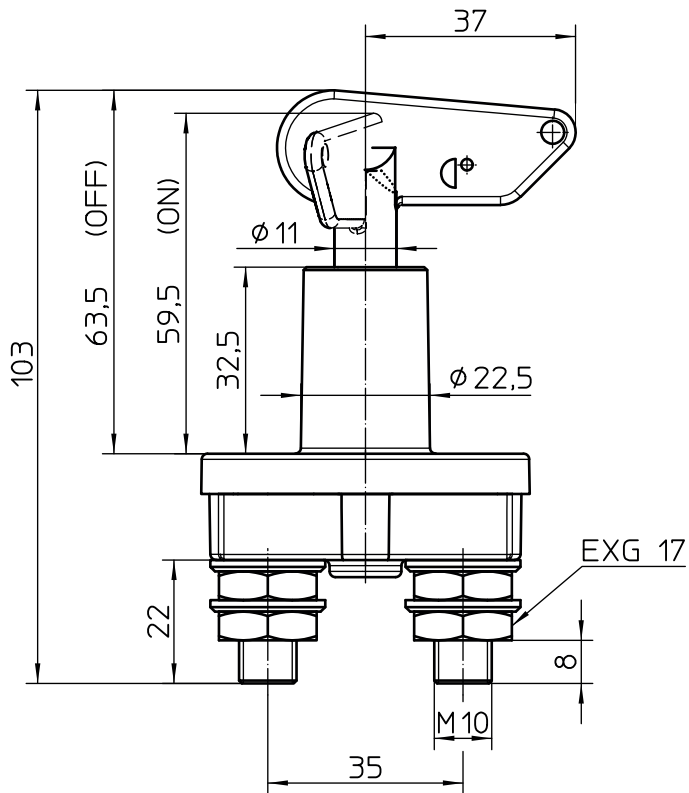
Zinc steel plated chain:	Order no. 520009
--------------------------	------------------

SPARE PARTS

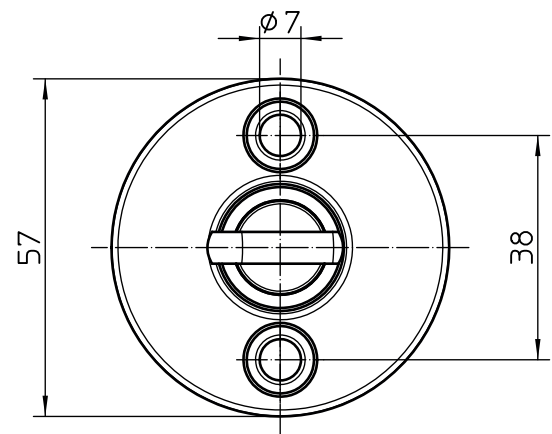
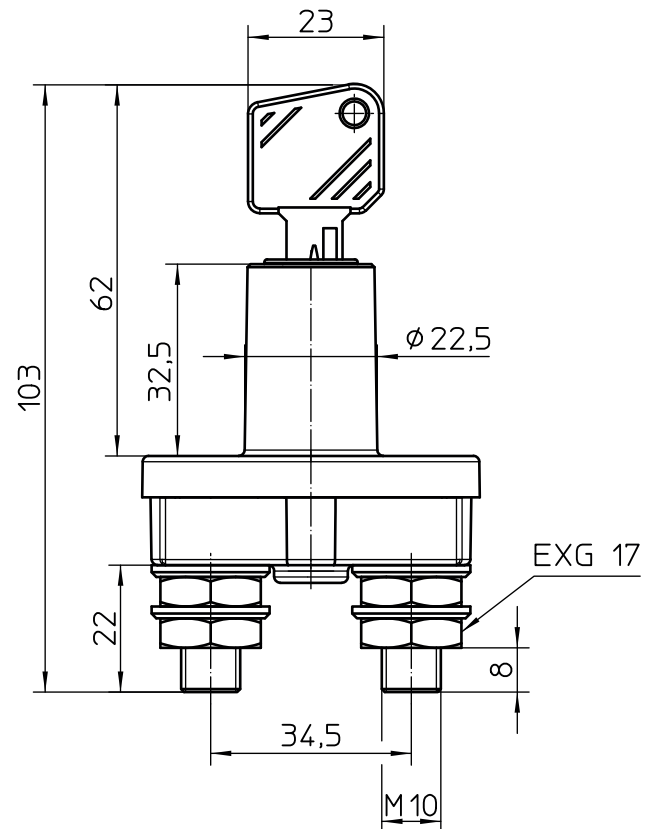
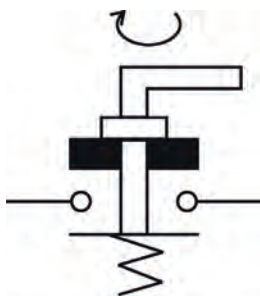
Handle:	Order no. 500032
Key:	Order no. 520000 (code required)



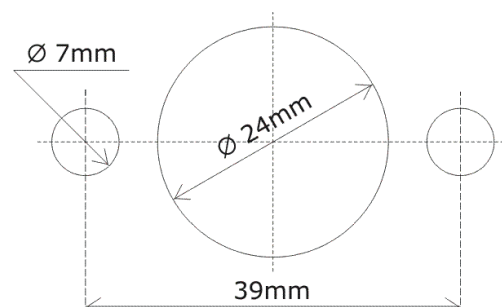
Diagrams



Connection



Fixing





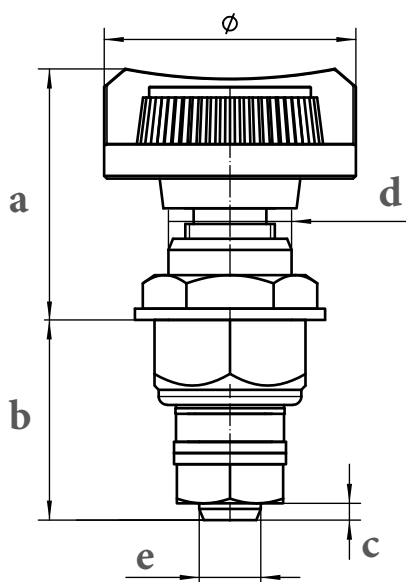
Chassis Isolator Switch

Single Pole 75A/80A/85A

Designed for isolating the negative wire in vehicles and other applications where the chassis is grounded. Single hole mounting in chassis with one connection provides for a simple installation, particularly in confined spaces.

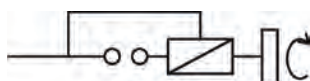
500026 / 500027 / 500028

Diagrams

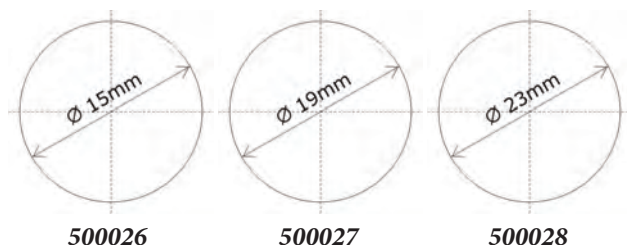


model	ϕ	a	b	c	d	e
500026	30	26	26	5	M14	M8
500027	36	32	32	5	M17	M10
500028	45	42	37	4	M22	M11

Connection



Fixing



Specifications

CODE NUMBERS:

500026 - 75A rating

500027 - 80A rating

500028 - 85A rating

GENERAL

Removable screw knob for safety and security.

ELECTRICAL

Rated Voltage: 24VDC maximum

Rated Current:

500026

75/200 Amps sustained/5 secs

500027

80/250 Amps sustained/5 secs

500028

85/300 Amps sustained/5 secs

Configuration:

Normally Open (N/O)

PHYSICAL

Termination:

500026/27/28

M8/M10/M11 copper studs

Stud Torque:

500026/27

12 ± 1.0 Nm

500028

15 ± 1.0 Nm

Contact:

Brass

Hardware:

Plated steel nut and washers

Construction:

Zinc plated steel body and thermoplastic knob

Operating Temp:

-40°C to +85°C

Weight (nominal):

500026/27/28

65/105/195 Grams

SPARE PARTS

Knob:

500026

Order no. 520008

500027

Order no. 520026

500028

Order no. 520007

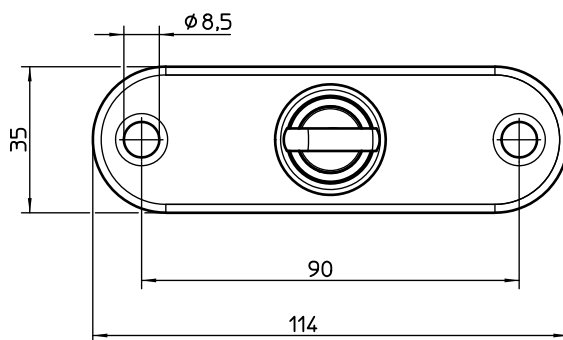
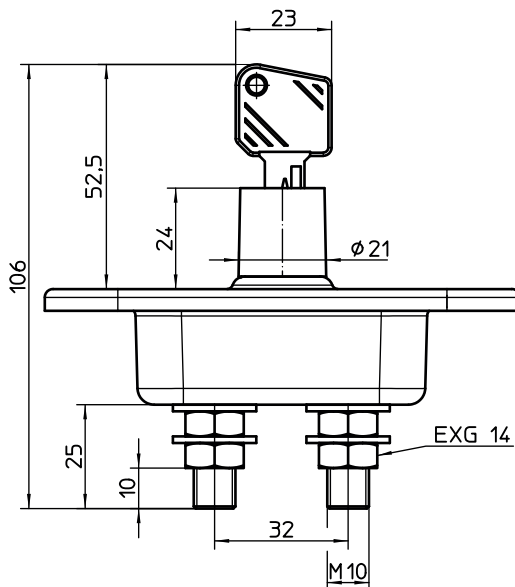


Battery Master Switch Single Pole 100A

Ideal for protecting valuable vehicles/equipment from theft. Removable key in both on and off positions allows for key to remain on driver's/operator's key-ring, whether in storage or operation. Simple protection at low cost.

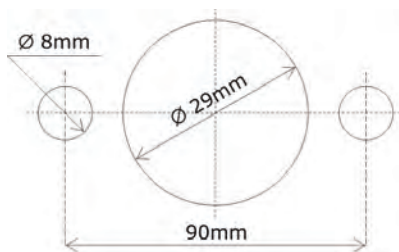
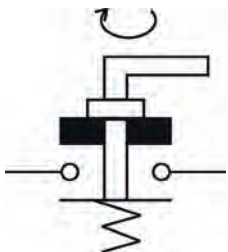
500023

Diagrams



Connection

Fixing



Specifications

CODE NUMBERS:

500023

GENERAL

Lockable with key removable in both ON and OFF positions.

ELECTRICAL

Rated Voltage:	48VDC maximum
Rated Current:	100/500 Amps sustained/5 secs
Configuration:	Normally Open (N/O)

PHYSICAL

Termination:	M10 copper studs
Stud Torque:	15 ±1.0 Nm
Contacts:	Copper
Hardware:	Plated steel nuts and washers
Construction:	Thermoplastic body with zinc plated steel frame and plated brass bushing.

Environmental:	IP63
Operating Temp:	-40°C to +85°C
Weight (nominal):	210 Grams (with key)

SPARE PARTS

Key:	Order no. 520000 (code required)
------	-------------------------------------

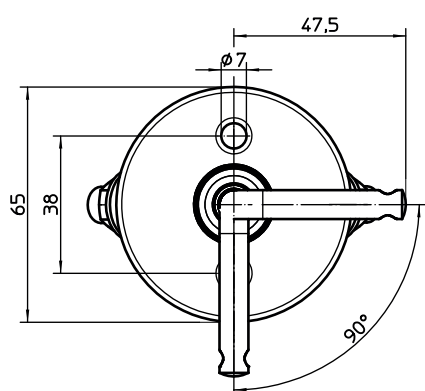
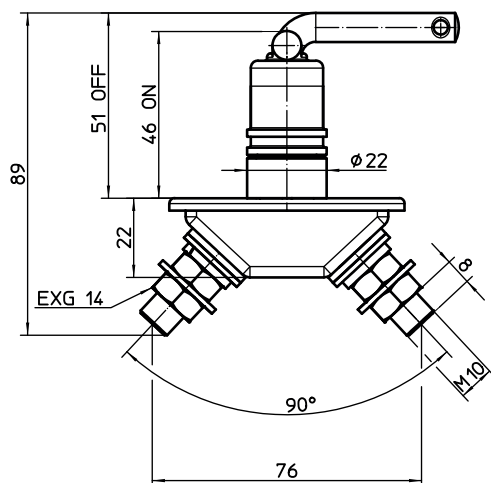


Battery Master Switch Single Pole 150A

These quality metal switches are ideal for use in vehicles, materials handling, agricultural and industrial equipment applications, etc. Available in zinc plated steel for general use and stainless steel for marine or corrosive environments.

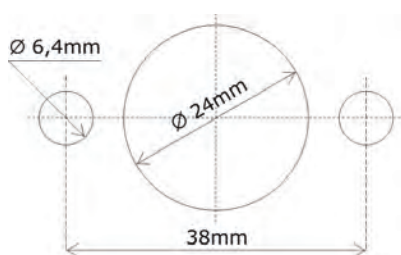
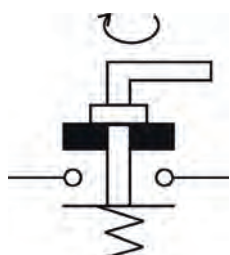
500006 / 500008

Diagrams



Connection

Fixing



Specifications

CODE NUMBERS:

500006 - Zinc plated

500008 - Stainless steel

GENERAL

Removable handle with weather protection.

ELECTRICAL

Rated Voltage:

48VDC maximum

Rated Current:

150/1000 Amps sustained/5 secs

Configuration:

Normally Open (N/O)

PHYSICAL

Termination:

M10 copper studs

Stud Torque:

15 ± 1.0 Nm

Contacts:

Copper

Hardware:

Brass nuts and washers

Construction:

500006

Zinc plated steel body and handle

500008

304 stainless steel body and handle

Environmental:

IP63

Operating Temp:

-40°C to +85°C

Weight (nominal):

500006

260 Grams with handle and chain

500008

255 Grams with handle and chain

SPARE PARTS

Handle:

500006

Order no. 520030

500008

Order no. 520002

Boot, chain and strap:

500006

Order no. 520022

500008

Order no. 520024

Boot and strap:

Order no. 520004



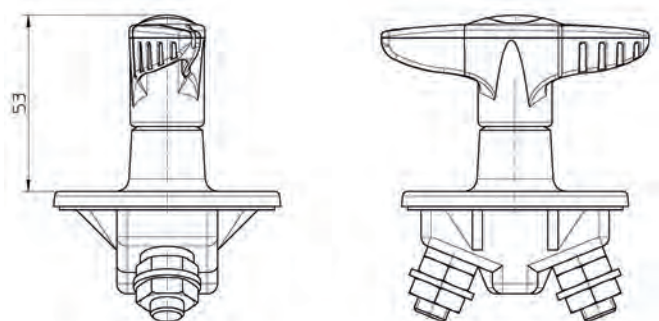
Battery Master Switch

Single Pole 150A

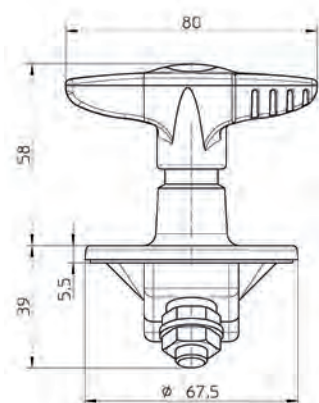
A robust device ideal for a multitude of heavy current switching applications in automotive, commercial and industrial vehicles. Constructed from quality materials and sealed to protect from harsh environmental conditions.

530100

Diagrams

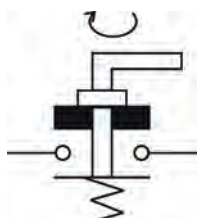


CLOSED

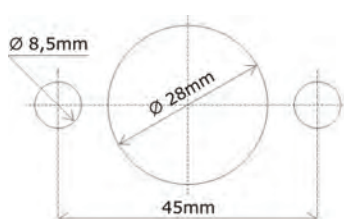


OPEN

Connection



Fixing



Specifications

CODE NUMBERS:

530100

GENERAL

Fixed handle with ergonomic grip is removable for installation.

Tested to 200 hours salt spray resistance.

ELECTRICAL

Rated Voltage: 48VDC maximum

Rated Current: 150/1000 Amps sustained/5 secs

Configuration: Normally Open (N/O)

PHYSICAL

Termination: M10 copper studs

Stud Torque: 9 ± 1.0 Nm

Contacts: Copper

Hardware: Brass nuts and washers

Construction: Reinforced plastic body with zinc plated die cast frame and thermoplastic handle.

Environmental: IP65

Operating Temp: -40°C to $+85^{\circ}\text{C}$

Weight (nominal): 240 Grams

SPARE PARTS

Handle: Order no. 580011

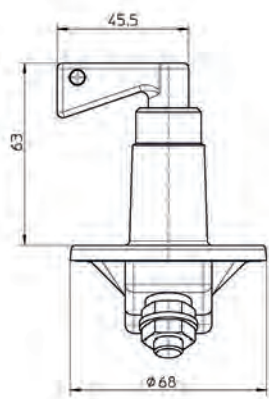


Battery Master Switch Single Pole 150A

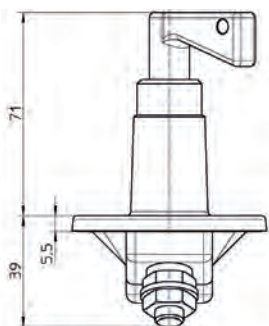
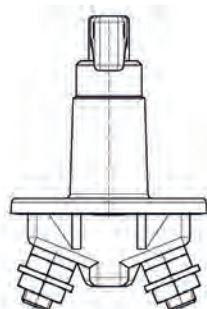
A robust device ideal for a multitude of heavy current switching applications in automotive, commercial and industrial vehicles. Constructed from quality materials and sealed to protect from harsh environmental conditions.

530101

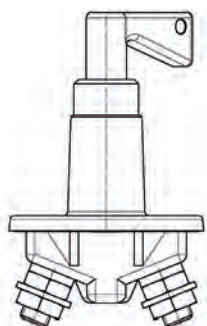
Diagrams



CLOSED



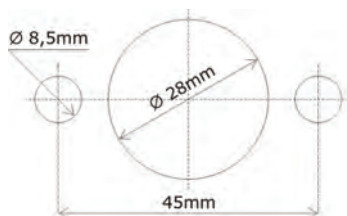
OPEN



Connection



Fixing



Specifications

CODE NUMBERS:

530101

GENERAL

Removable heavy duty handle.
Tested to 200 hours salt spray resistance.

ELECTRICAL

Rated Voltage: 48VDC maximum
Rated Current: 150/1000 Amps sustained/5 secs
Configuration: Normally Open (N/O)

PHYSICAL

Termination: M10 copper studs
Stud Torque: 9 ± 1.0 Nm
Contacts: Copper
Hardware: Brass nuts and washers
Construction: Reinforced plastic body with zinc plated die cast frame and die cast handle.

Environmental: IP65
Operating Temp: -40°C to $+85^{\circ}\text{C}$
Weight (nominal): 340 Grams

SPARE PARTS

Handle: Order no. 580019

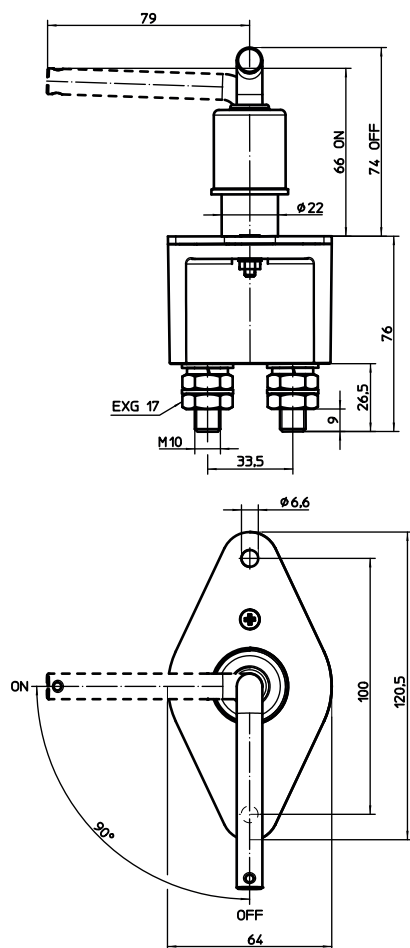


Battery Master Switch Single Pole 250A

Designed for switching high current loads in various automotive, commercial and industrial vehicles. This high performance switch is constructed from quality materials and sealed to protect from harsh environmental conditions.

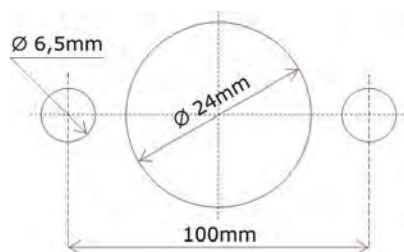
500010

Diagrams



Connection

Fixing



Specifications

CODE NUMBERS:

500010

GENERAL

Removable heavy duty handle with retaining chain. Includes weather protective boot and seal.

ELECTRICAL

Rated Voltage: 48VDC maximum
Rated Current: 250/2500 Amps sustained/5 secs
Configuration: Normally Open (N/O)

PHYSICAL

Termination: M10 copper studs
Stud Torque: 15 ± 1.0 Nm
Contacts: Copper
Hardware: Steel nuts and washers
Construction: Reinforced plastic body with zinc plated stamped steel frame and handle.

Environmental: IP65
Operating Temp: -40°C to $+85^{\circ}\text{C}$
Weight (nominal): 565 Grams

SPARE PARTS

Handle: Order no. 520009
Handle, chain, boot and strap: Order no. 520020
Boot and strap: Order no. 520003



Battery Master Switch

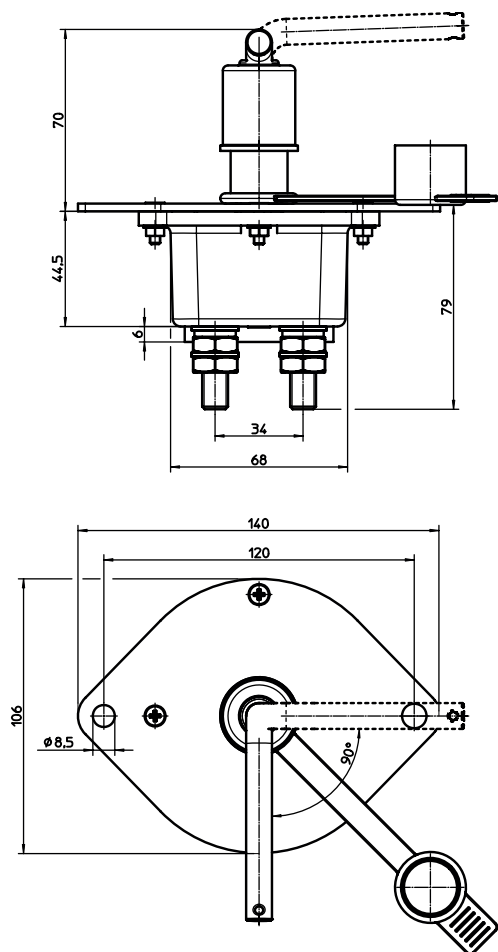
Double Pole 250A

Designed for switching high current loads in various automotive, commercial and industrial vehicles. This high performance switch is constructed from quality materials and sealed to protect from harsh environmental conditions.

500055

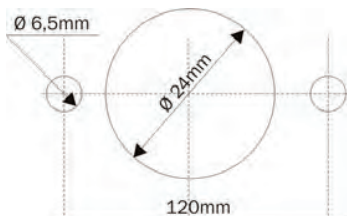
Diagrams

Specifications



Connection

Fixing



CODE NUMBERS:

500055

GENERAL

Removable heavy duty handle with retaining chain. Includes weather protective boot and seal.

ELECTRICAL

Rated Voltage: 48VDC maximum
Rated Current: 250/2500 Amps sustained/5 secs
Configuration: Normally Open (N/O)

PHYSICAL

Termination: M10 tin plated copper studs
Stud Torque: 15 ± 1.0 Nm
Contacts: Copper
Hardware: Steel nuts and washers
Construction: Reinforced plastic body with zinc plated stamped steel frame and handle.
Environmental: IP66
Salt Spray: Body & studs resistant to ISO9227: 72h
Washers & nuts resistant to ISO9227: 120h
Operating Temp: -40°C to $+85^{\circ}\text{C}$
Weight (nominal): 1 Kilogram

SPARE PARTS

Handle: Order no. 520029
Handle, chain, boot and strap: Order no. 520020
Boot and strap: Order no. 520003



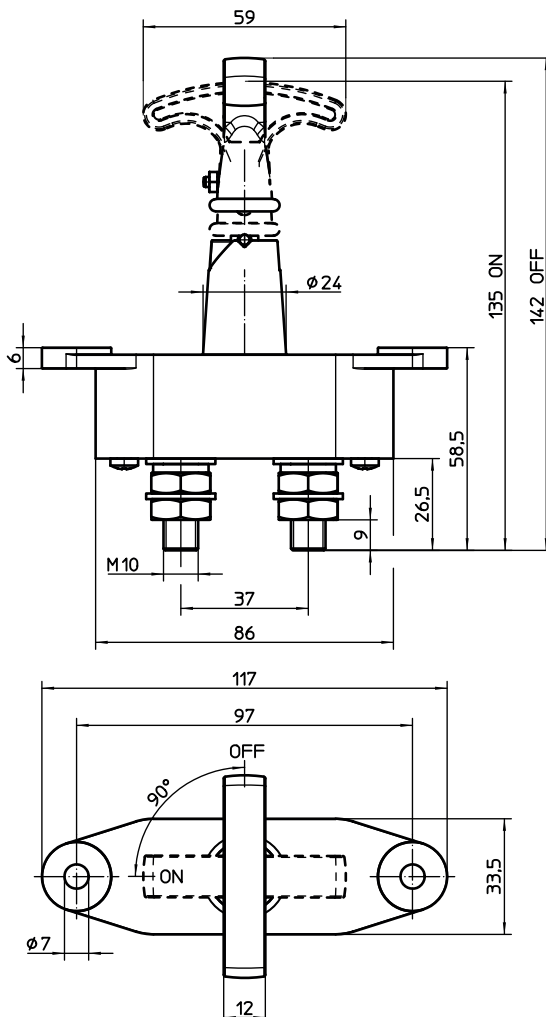
Battery Master Switch

Single Pole 250A

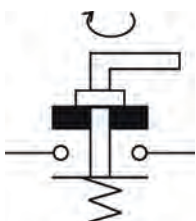
This heavy duty switch features a die cast zinc housing and strong T handle. It is ideal for a multitude of heavy current switching applications in automotive, commercial and industrial vehicles.

500018

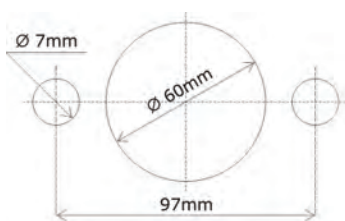
Diagrams



Connection



Fixing



Specifications

CODE NUMBERS:

500018

GENERAL

Pull and turn action to isolate, twist release for instant on.

Fixed handle is removable and replaceable.

ELECTRICAL

Rated Voltage: 48VDC maximum

Rated Current: 250/2000 Amps sustained/5 secs

Configuration: Normally Open (N/O)

PHYSICAL

Termination: M10 copper studs

Stud Torque: 15 ± 1.0 Nm

Contacts: Copper

Hardware: Plated steel nuts and washers

Construction: Reinforced plastic body with zinc plated die cast frame and die cast handle.

Operating Temp: -40°C to $+85^{\circ}\text{C}$

Weight (nominal): 535 Grams

SPARE PARTS

Handle: Order no. 580019



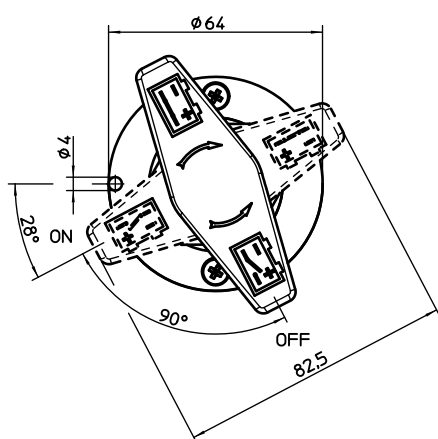
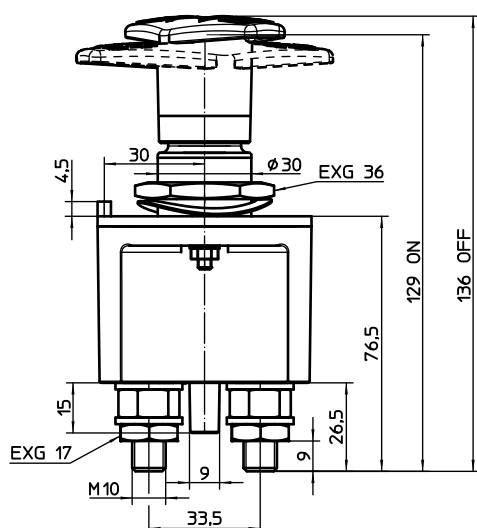
Battery Master Switch

Single Pole 300A

A robust switch designed for switching heavy current in a myriad of automotive, commercial and industrial vehicle applications. Featuring sealed construction, anti-rotation stop, strong cast aluminium handle, all in a compact housing.

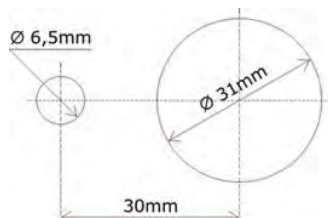
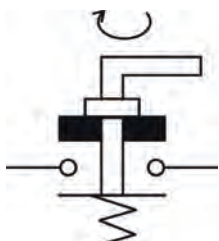
500013

Diagrams



Connection

Fixing



Specifications

CODE NUMBERS:

500013

GENERAL

Environmentally sealed to IP67 for high protection.
Fixed T handle is removable and replaceable.

ELECTRICAL

Rated Voltage: 48VDC maximum
Rated Current: 300/3000 Amps sustained/5 secs
Configuration: Normally Open (N/O)

PHYSICAL

Termination: M10 copper studs
Stud Torque: 15 ± 1.0 Nm
Contacts: Copper
Hardware: Brass nuts and washers
Construction: Reinforced plastic body with zinc plated die cast frame and die cast T handle.

Environmental: IP67
Operating Temp: -40°C to $+85^{\circ}\text{C}$
Weight (nominal): 515 Grams

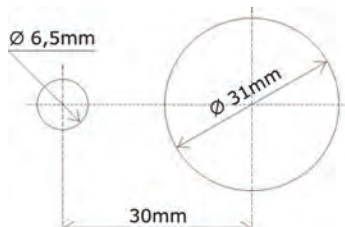
SPARE PARTS

Handle: Order no. 500031



500024

Specifications



500024

For safety reasons, key is removable in OFF position only.

Rated Voltage: 48VDC maximum
Rated Current: 300/3000 Amps sustained/5 secs
Configuration: Normally Open (N/O)

Termination:	M10 copper studs
Stud Torque:	15 ± 1.0 Nm
Contacts:	Copper
Hardware:	Brass nuts and washers
Construction:	Reinforced plastic body with zinc plated die cast frame and stainless key barrel.

Environmental: IP63
Operating Temp: -40°C to +85°C
Weight (nominal): 430 Grams (with key)

Key: Order no. 520000
(code required)



Battery Master Switch

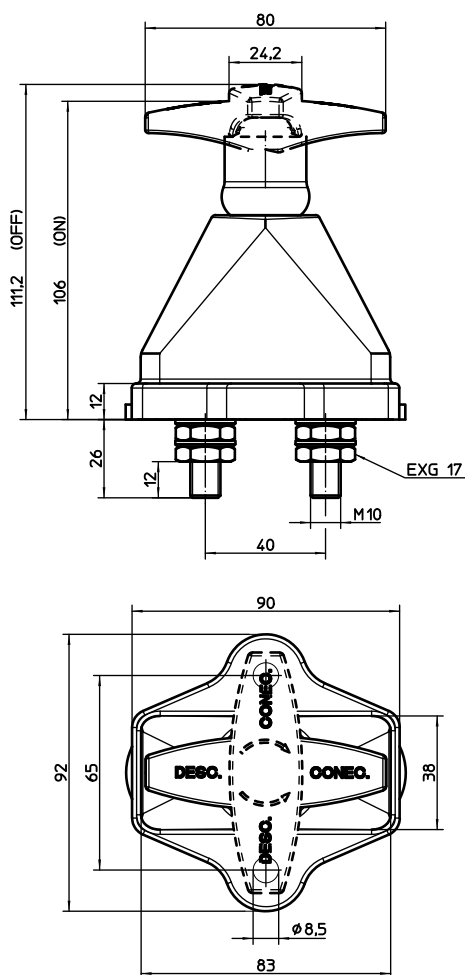
Single Pole 350A

A heavy duty device for switching super high current in automotive, commercial and industrial vehicle applications. Featuring sealed construction, robust die cast housing, die cast T handle, all in a compact housing.

500015

Diagrams

Specifications



CODE NUMBERS:

500015

GENERAL

Environmentally sealed to IP67 rating for high protection.
Fixed, heavy-duty die cast handle is non-removable.

ELECTRICAL

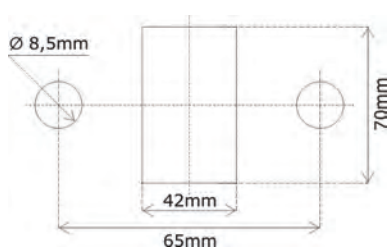
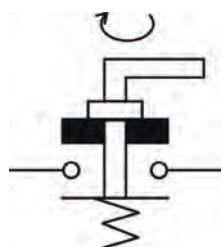
Rated Voltage: 48VDC maximum
Rated Current: 350/3500 Amps sustained/5 secs
Configuration: Normally Open (N/O)

PHYSICAL

Termination: M10 copper studs
Stud Torque: 15 ± 1.0 Nm
Contacts: Copper
Hardware: Brass nuts and washers
Construction: Zinc die cast body with reinforced plastic base and aluminium die cast T handle.
Environmental: IP67
Operating Temp: -40°C to $+85^{\circ}\text{C}$
Weight (nominal): 710 Grams

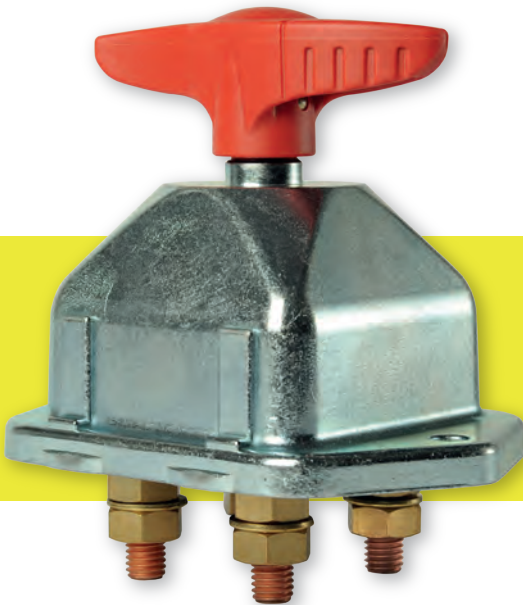
Connection

Fixing



OPTIONS

With dependent auxiliary circuit: Order no. 500016
With independent auxiliary circuit: Order no. 500017



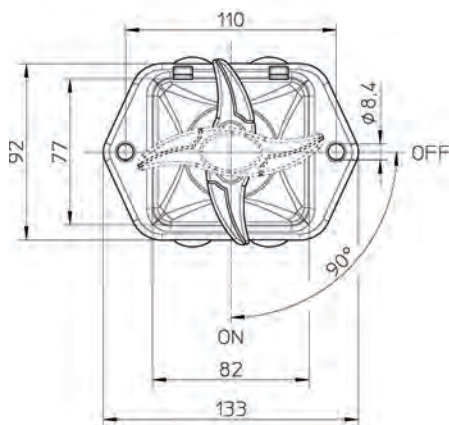
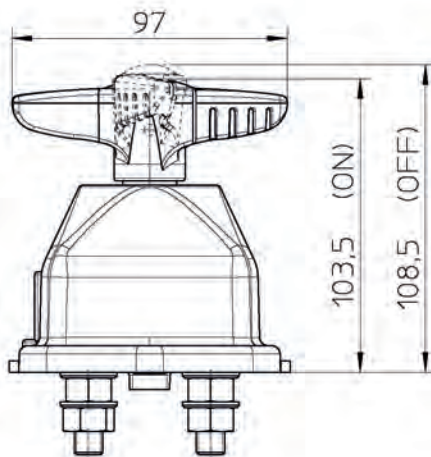
Battery Master Switch Double Pole 250A

A heavy duty device for switching high current in automotive, commercial and industrial vehicle applications. Featuring sealed construction, robust die cast housing, thermoplastic T handle, all in a compact housing.

530110

Diagrams

Specifications



CODE NUMBERS:

530110

GENERAL

Environmentally sealed to IP65 rating for extra protection. Ergonomically designed, fixed thermoplastic T handle is non-removable.

Tested to 200 hours salt spray resistance.

ELECTRICAL

Rated Voltage: 48VDC maximum
Rated Current: 250/2500 Amps sustained/5 secs
Configuration: Normally Open (N/O)

PHYSICAL

Termination: M10 copper studs
Stud Torque: 15 ± 1.0 Nm
Contacts: Copper
Hardware: Brass nuts and washers
Construction: Zinc die cast body with reinforced plastic base and thermoplastic T handle.

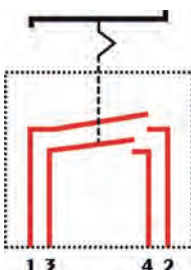
Environmental: IP65
Operating Temp: -40°C to $+85^{\circ}\text{C}$
Weight (nominal): 985 Grams

OPTIONS

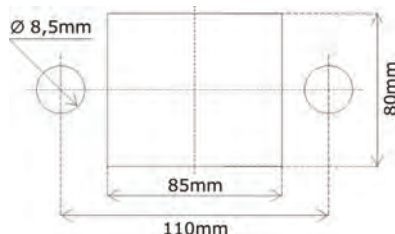
With dependent auxiliary circuit: Order no. 530112 (screw terminals)

With independent auxiliary circuit: Order no. 530114 (QC terminals)

Connection



Fixing



Battery Master Switch Single Pole 75A Continuous

A range of economical thermoplastic switches for auxiliary circuits in many boats and yachts. Available as a standard switch, with weather seal boot and cap or as a key lock version.

500001 / 500043 / 500021

Specifications

CODE NUMBERS:

- 500001 - Standard
- 500043 - With weather seal protection
- 500021 - Lockable with removable key

GENERAL

Key/handle removable in OFF position only.

ELECTRICAL

Rated Voltage:	48VDC maximum
Rated Current:	75/350 Amps sustained/5 secs
Configuration:	Normally Open (N/O)

PHYSICAL

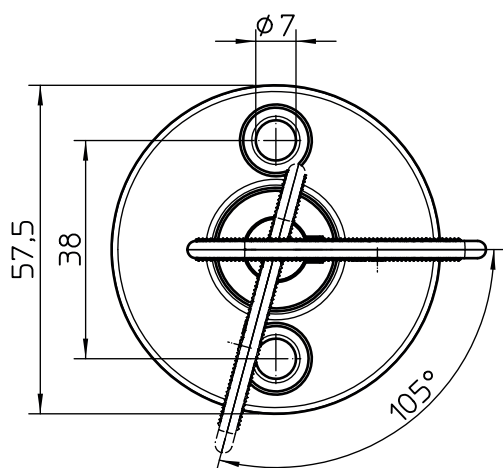
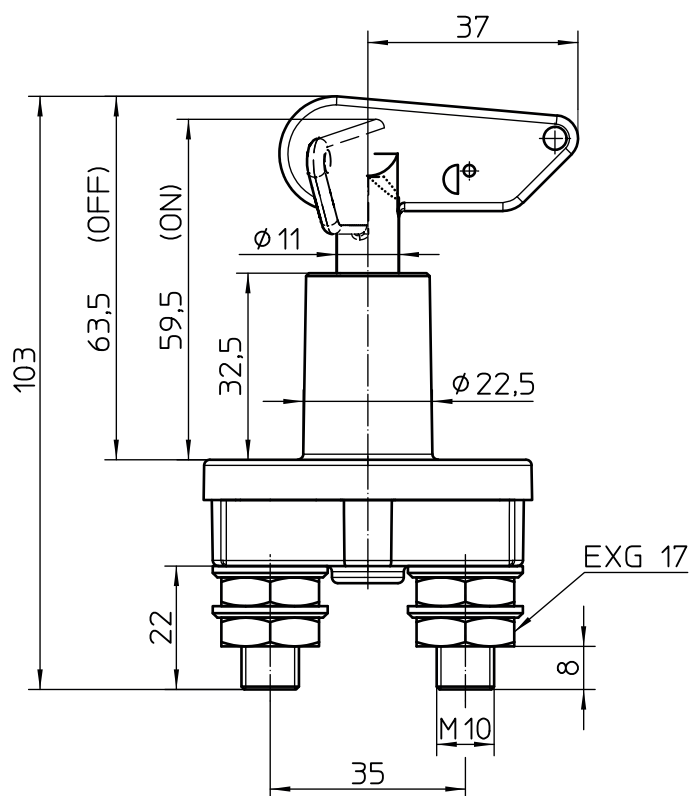
Termination:	M10 copper studs
Stud Torque:	12 ± 1.0 Nm
Contacts:	Copper
Hardware:	Brass nuts and washers
Construction:	Thermoplastic body and handle
Environmental:	IP67
Operating Temp:	-40°C to +85°C
Weight (nominal):	
500001	135 Grams
500043	155 Grams
500021	150 Grams (with key)

SPARE PARTS

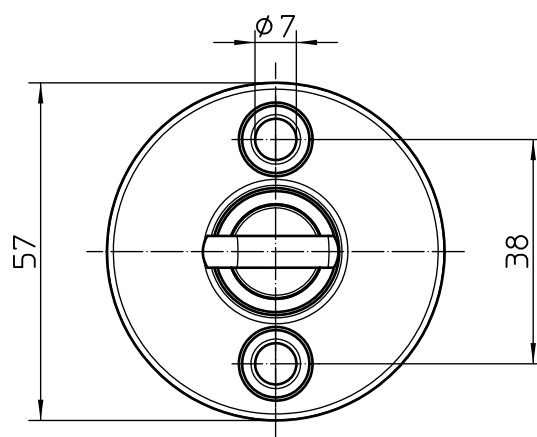
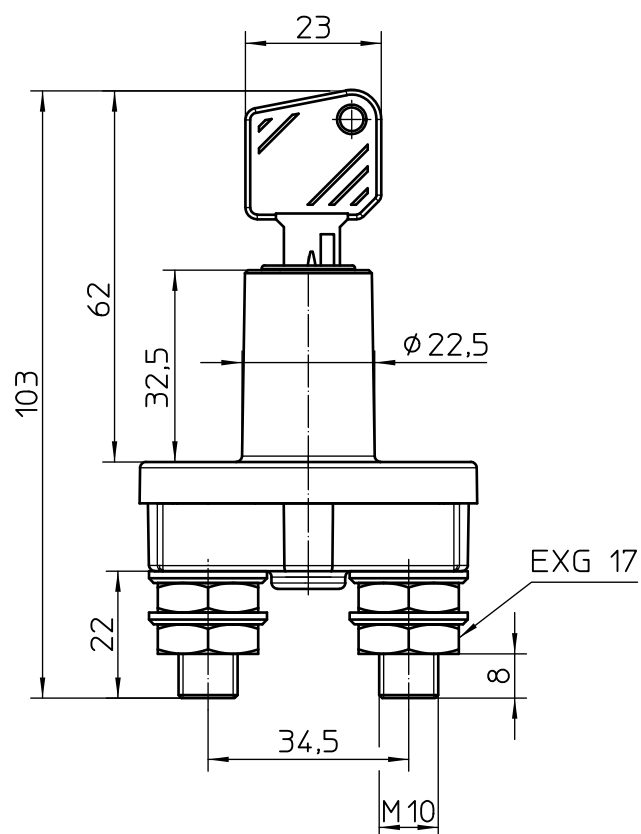
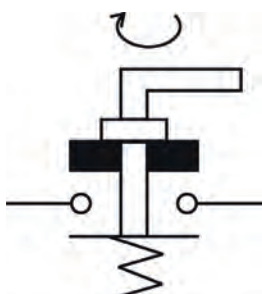
Handle:	Order no. 500032
Key:	Order no. 520000 (code required)



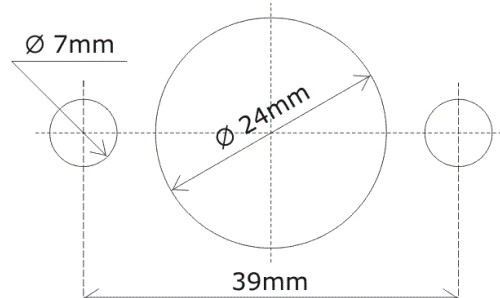
Diagrams



Connection



Fixing



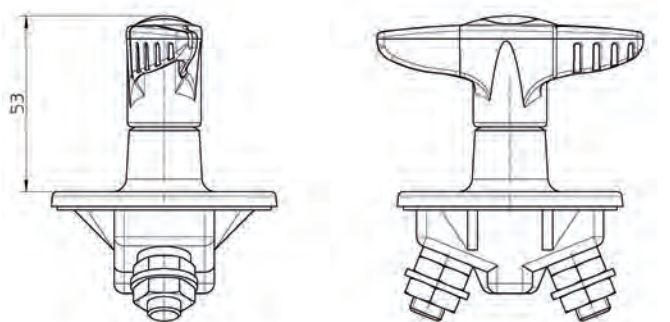


Battery Master Switch Single Pole 150A

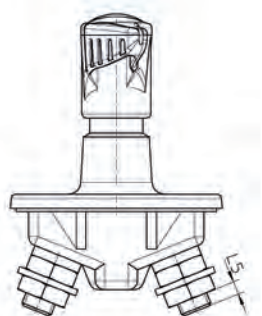
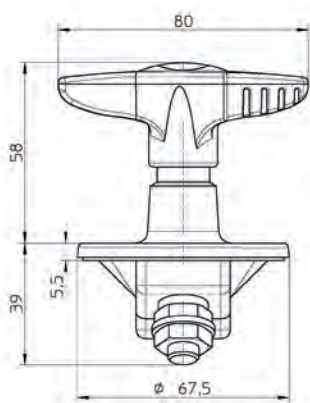
A robust device ideal for a multitude of heavy current switching applications in boat and yacht applications. Constructed from quality materials and sealed to protect from harsh environmental conditions.

530102

Diagrams



CLOSED

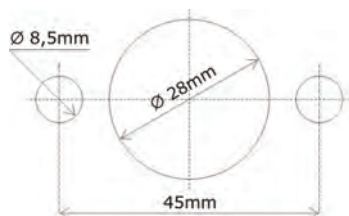


OPEN

Connection



Fixing



Specifications

CODE NUMBERS:

530102

GENERAL

Fixed handle with ergonomic grip is removable for installation.

Tested to 200 hours salt spray resistance.

ELECTRICAL

Rated Voltage: 48VDC maximum

Rated Current: 150/1000 Amps sustained/5 secs

Configuration: Normally Open (N/O)

PHYSICAL

Termination: M10 copper studs

Stud Torque: 9 ± 1.0 Nm

Contacts: Copper

Hardware: Brass nuts and washers

Construction: Reinforced plastic body with zinc plated and epoxy coated die cast frame and thermoplastic handle.

Environmental: IP65

Operating Temp: -40°C to $+85^{\circ}\text{C}$

Weight (nominal): 240 Grams

SPARE PARTS

Handle with cap: Order no. 580011

Cap: Order no. 580010

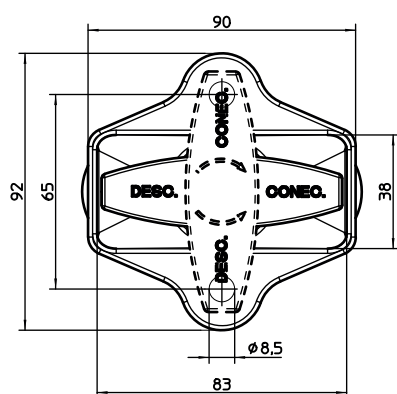
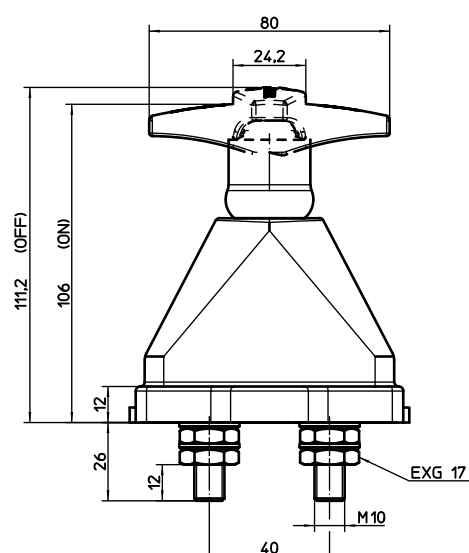


Battery Master Switch Single Pole 350A

A heavy duty device for switching super high current in many boat and yacht applications. Featuring sealed construction, robust die cast housing, die cast T handle, all in a compact housing.

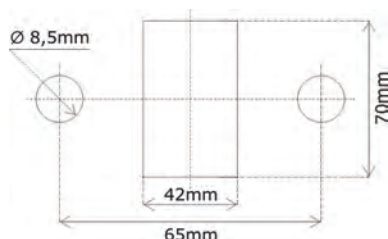
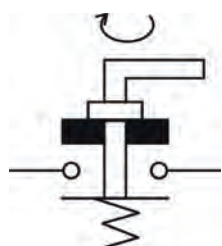
500014

Diagrams



Connection

Fixing



Specifications

CODE NUMBERS:

500014

GENERAL

Environmentally sealed to IP67 rating for high protection.

Fixed, heavy-duty die cast handle is non-removable.

ELECTRICAL

Rated Voltage:

48VDC maximum

Rated Current:

350/3500 Amps sustained/5 secs

Configuration:

Normally Open (N/O)

PHYSICAL

Termination:

M10 copper studs

Stud Torque:

15 ± 1.0 Nm

Contacts:

Copper

Hardware:

Brass nuts and washers

Construction:

Zinc die cast and epoxy coated body with reinforced plastic base and aluminium die cast T handle.

Environmental:

IP67

Operating Temp:

-40°C to +85°C

Weight (nominal):

710 Grams

OPTIONS

With dependent

auxiliary circuit:

Order no. 5XXXXX

With independent

auxiliary circuit:

Order no. 5XXXXX

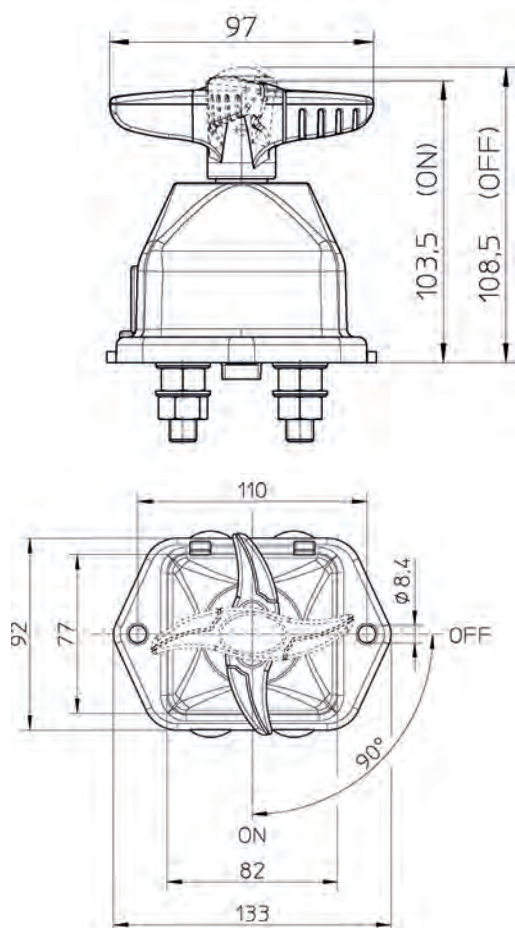


Battery Master Switch Double Pole 250A

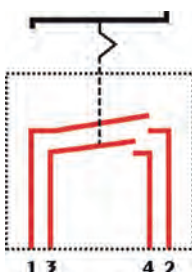
A heavy duty device for switching high current in many boat and yacht applications. Featuring sealed construction, robust die cast housing, thermoplastic T handle, all in a compact housing.

530111

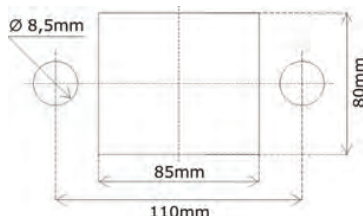
Diagrams



Connection



Fixing



Specifications

CODE NUMBERS:

530111

GENERAL

Environmentally sealed to IP65 rating for extra protection. Ergonomically designed, fixed thermoplastic T handle is non-removable.

Tested to 200 hours salt spray resistance.

ELECTRICAL

Rated Voltage: 48VDC maximum
Rated Current: 250/2500 Amps sustained/5 secs
Configuration: Normally Open (N/O)

PHYSICAL

Termination: M10 copper studs
Stud Torque: 15 ± 1.0 Nm
Contacts: Copper
Hardware: Brass nuts and washers
Construction: Zinc die cast and epoxy coated body with reinforced plastic base and thermoplastic T handle.

Environmental: IP65
Operating Temp: -40°C to $+85^{\circ}\text{C}$
Weight (nominal): 985 Grams

OPTIONS

With dependent auxiliary circuit: Order no. 530113 (screw terminals)

With independent auxiliary circuit: Order no. 530115 (QC terminals)

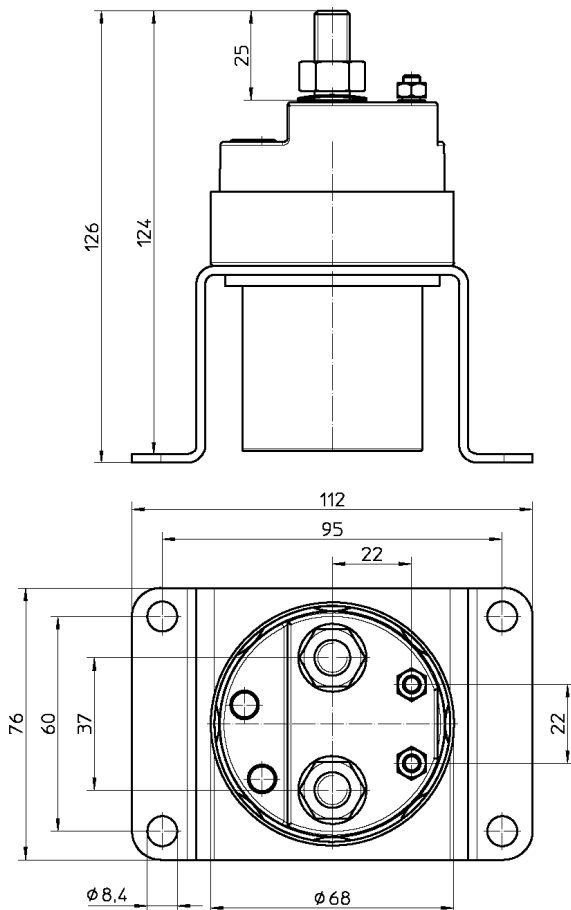


Electromagnetic Battery Switch Single Pole 300A

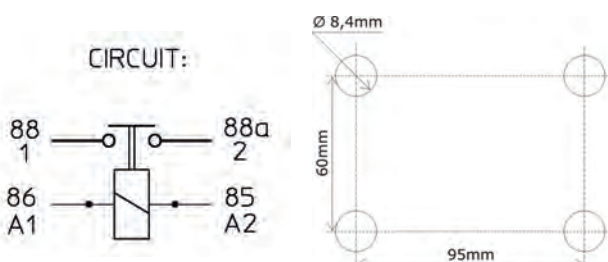
A heavy duty remote operated contactor for switching high current loads in commercial, industrial and marine transport applications. Featuring sealed design, robust construction and easy mounting, all in a compact housing.

530000 / 530001

Diagrams



Fixing



Specifications

CODE NUMBERS

530000 – 12VDC

530001 – 24VDC

GENERAL

Low coil holding current. Surface mount U bracket.
Tested to 200 hours salt spray resistance.

ELECTRICAL – CONTROL CIRCUIT

Inrush Current:

530000/530001 7/4.5 Amps

Holding Current:

530000/530001 0.3/0.25 Amps

Engaging Voltage:

530000/530001 $\geq 9 / \geq 18$ Volts

Disengaging Voltage:

530000/530001 $\leq 4 / \leq 6$ Volts

Power Dissipation:

≤ 6 Watts

ELECTRICAL – POWER CIRCUIT

Rated Voltage: 48VDC maximum

Rated Current: 300/2400 Amps sustained/ 1 sec

Configuration: Normally Open (N/O)

PHYSICAL

Termination- Power: M10 copper studs

Stud Torque - Power: 14 ± 1.5 Nm

Termination - Control: M5 brass studs

Stud Torque - Control: 4 ± 1.0 Nm

Contacts: Copper

Hardware: Brass nuts and washers

Construction: Reinforced plastic base with black zinc plated steel body and frame.

Environmental: IP65

Operating Temp: -40°C to $+85^{\circ}\text{C}$

Weight (nominal): 1.1 Kilogram

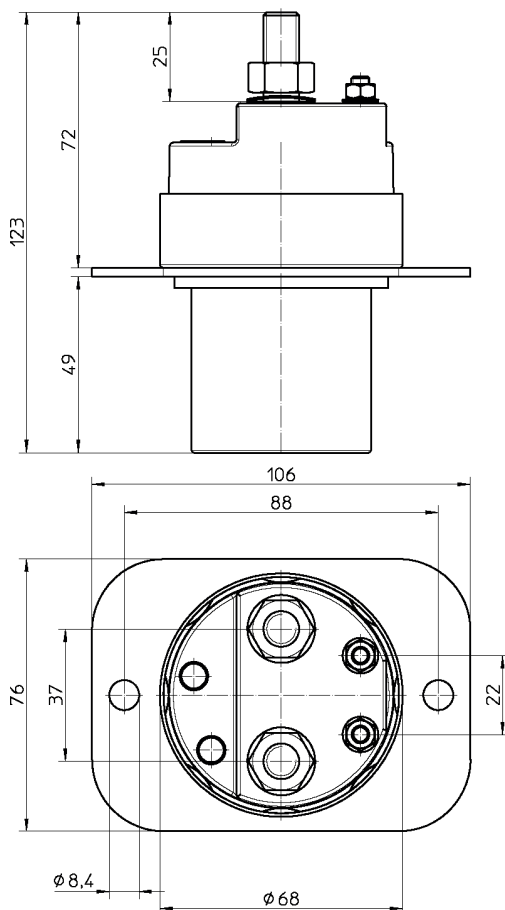
Electromagnetic Battery Switch Single Pole 300A

A heavy duty remote operated contactor for switching high current loads in commercial, industrial and marine transport applications. Featuring sealed design, robust construction and easy mounting, all in a compact housing.

530010 / 530011

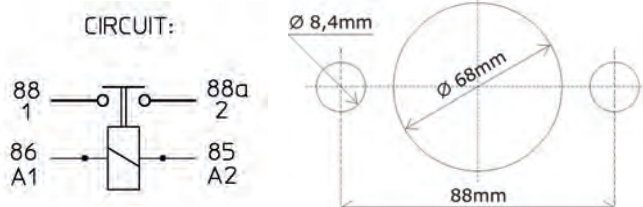
Diagrams

Specifications



Connection

Fixing



CODE NUMBERS

530010 – 12VDC

530011 – 24VDC

GENERAL

Low coil holding current. Recessed mount flat bracket.
Tested to 200 hours salt spray resistance.

ELECTRICAL – CONTROL CIRCUIT

Inrush Current:

530010/530011 7/4.5 Amps

Holding Current:

530010/530011 0.3/0.25 Amps

Engaging Voltage:

530010/530011 $\geq 9/\geq 18$ Volts

Disengaging Voltage:

530010/530011 $\leq 4/\leq 6$ Volts

Power Dissipation:

≤ 6 Watts

ELECTRICAL – POWER CIRCUIT

Rated Voltage: 48VDC maximum

Rated Current: 300/2400 Amps sustained/ 1 sec

Configuration: Normally Open (N/O)

PHYSICAL

Termination- Power: M10 copper studs

Stud Torque - Power: 14 ± 1.5 Nm

Termination - Control: M5 brass studs

Stud Torque - Control: 4 ± 1.0 Nm

Contacts: Copper

Hardware: Brass nuts and washers

Construction: Reinforced plastic base with black zinc plated steel body and frame.

Environmental: IP65

Operating Temp: -40°C to $+85^{\circ}\text{C}$

Weight (nominal): 1.0 Kilogram

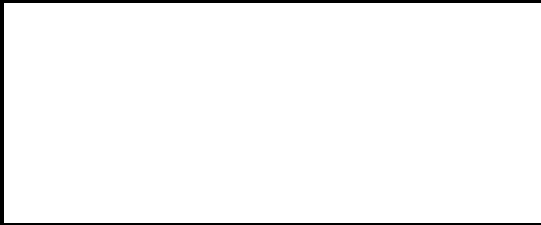


Amelec Australia Pty Ltd warrants all Cormar products against defects in factory workmanship and materials for a period of 12 months from final point of sale providing the item in question does not exceed the manufacture date by more than 2 (two) years. Specific exclusions of this warranty apply where the item in question has been misapplied or used for a purpose for which it is not designed or intended; or altered in any way that would be detrimental to the performance or life of the product; or opened or tampered with by an unauthorised party; or contaminated by oil, water, grease or other substances; or subjected to misuse, negligence, excessive vibration or mechanical abuse; or damaged as a result of incorrect connection or voltage. On any part or product found to be defective after examination by Amelec Australia Pty Ltd or their authorised agent, Amelec Australia will only repair or replace the merchandise through the original selling dealer. Amelec Australia assumes no responsibility for diagnosis, removal and/or installation labour, loss of equipment use, loss of time, inconvenience or any other subsequent expenses including freight costs. Save and except for the express warranty set out above and to the maximum extent permitted by law, all conditions and warranties which may at any time be implied by the common law, Trade Practices Act, Fair Trading Act or any other State or Federal Act are excluded. To the extent that these cannot be excluded and where the law permits, Amelec Australia liability in respect of any such condition or warranty shall be limited at the option of Amelec Australia to the repair or the replacement of the goods or the supply of equivalent goods or refunding the cost of the goods. Amelec Australia Pty Ltd A.B.N. 38 009 386 216

©2014 - Amelec Australia Pty Ltd. ABN 38 009 386 216.

All rights reserved. This catalogue may not be reproduced in full or part, by any means, without the express written permission of the copyright owners.

Disclaimer: E & O.E. - the information and specifications detailed in this catalogue were deemed to be accurate at the time of printing. Amelec Australia Pty Ltd reserves the right, subject to Australian law, at its discretion and without notice, to change the information and specifications contained within.



16 Parkinson Lane, O'Connor
WA 6163 Australia
Phone +61 8 9331 3100
Fax +61 8 9331 5150
Email mail@amelec.com.au
Web www.amelec.com.au